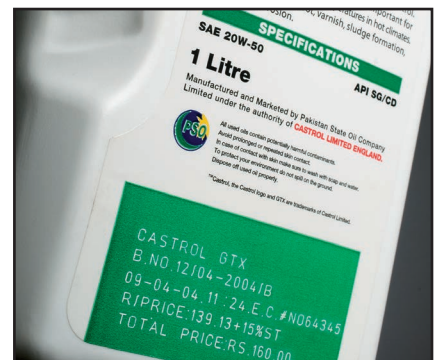


**ID TECHNOLOGY®**

# SPA CIP

IP65 LASER by MACSA



**L&C**

**LABELING  
& CODING**



# SPA CIP

SPA CIP has been designed to operate in wash down, wet and dusty environments, adding complete protection to the laser tube and lenses.

## IP65

SPA CIP is completely protected and watertight from dust and also from water jets in all directions. Thanks to its stainless steel coating which makes it a robust and reliable laser in the harshest production environments.

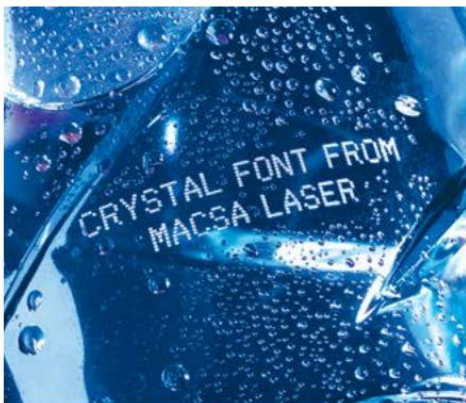
IP65 is a guarantee of reliability, even in the harshest environments.

## High Speed

SPA CIP codes and marks information at a very high speed maintaining an excellent definition, without interruptions even in the most hostile conditions

## Environmentally Friendly

Laser technology is environmentally friendly as it reduces the need for consumables, avoids generation of harmful emissions and energy consumption is kept to a minimum.



# Connectivity

SPA CIP (indeed, all SPA lasers) can be controlled from:

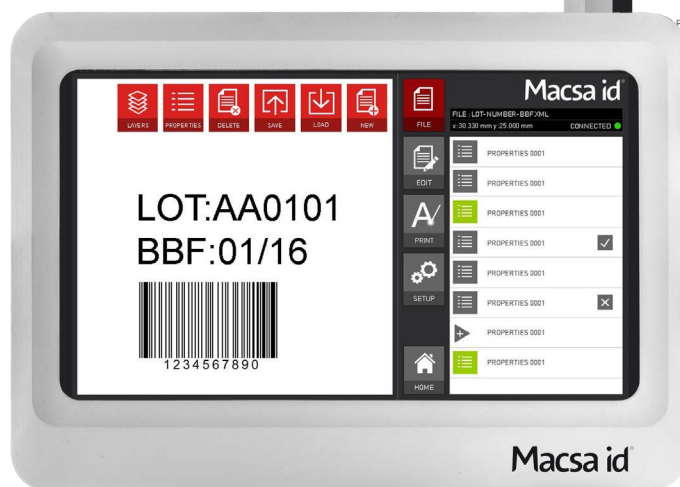
- Simple Handheld Terminal
- Touch Screen
- Via Computer Using Marca or NiceLabel Software

## SPA Touch Screen

### *Maintenance Screen*

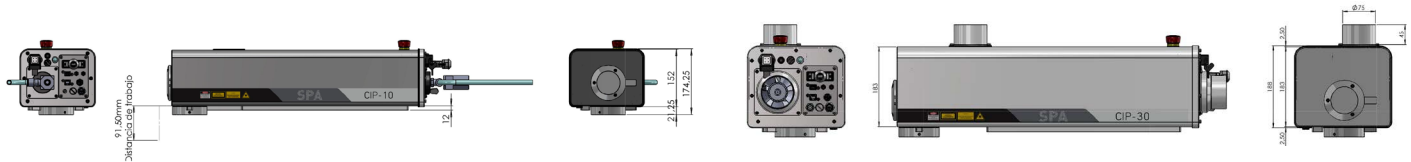


### *Statistics & OEE Screen*



### *Print Format Design Screen*

# SPA CIP - IP65 Laser



SPA CIP - 10

SPA CIP - 30

SPA CIP - 10 & CIP - 30						
MODEL				CIP - 10		CIP - 30
POWER				10W		30W
WAVELENGTH				10.6 μm (For Bio Materials) / 10.2 μm (For Laminated Film) /9.3 μm (For PET Bottles)		
LASER SYSTEM				SPA C -10		SPA C - 30
MAINS SUPPLY				100V - 240V 50 / 60 Hz (1 Phase + N) 300 VA		100V - 240V 50 / 60 Hz (1 Phase + N) 600 VA
COOLING KIT	VORTEX KIT			2,5bar / 400lpm		2,5bar / 600lpm
	COOLING DRYER KIT			2,5bar / 200lpm		2,5bar / 300lpm
	FILTERED BLOWER KIT	200 m³/h	0,135 KW			
		350 m³/h	0,46 KW			
	* Important Note			The compressed air must be clean and dry cooled.		
DIMENSIONS				145,5x194x715 mm		176x216x723,5 mm
WEIGHT				Net weight: 17Kg - Gross Weight: 20Kg		Net weight: 25Kg - Gross Weight: 28Kg
SYSTEM				Optics, laser, galvanometric scanners, control and power electronics, drivers of the digital scanners, CPU, power supplies and laser source built in a single block.		
FOCAL SPECIFIC.	TECHNOLOGY			SPA CIP 65		
				C -	10	30
	MA (mm)	WD (mm)	FL (mm)	BD (μm)	PD (KW/cm²)	PD (KW/cm²)
	40x40	55	65	150	113	338
	60x60	85	95	192	69	207
	75x75	115	125	253	40	119
	100x100	150	160	324	24	73
	150x150	230	240	486	11	32
	200x200	310	320	648	6	18
	250x250	400	410	830	4	11
	LEGEND			WD:Working Distance FL:Focal Length MA:Marking Area BD:Spot Beam Diameter PD:Power Density		
IMPORTANT NOTE			• Working Distance (WD): The distance between the laser system base and the surface to be marked.			
			• Focal Length (FL): The distance between the center of the lens and the surface to be marked.			
			• Approximate values: These values are an approximation, and they are different for each laser system, due to the different optical paths.			
SOFTWARE				• ScanLinux V5.2.7 and later. • Marca Software V5.6.9 and later. • Internal Barcode. • Marca Lite Software.		
USER INTERFACE				• Touch Screen. • Hand Held Terminal. • PC.		
CONTROLLED BY				• Hand Held Terminal with ScanLinux software. • Touch Screen with ScanLinux software. • Full Graphics Interface: includes Marca™ software, dongle and Ethernet cable (TCP / IP). • Marca Lite Software: includes Marca™ software, dongle and Ethernet cable (TCP / IP).		
ACCESSORIES				Handheld Terminal-Touch Screen Terminal - Beam pointer - Encoder Kit - Photocell Kit - Alarm Kit - Fume Extractor - Mounting support - Mounting Bracket U-ARM - Marking paper - Protection goggles - Cooling Kit: Air/Water, Filtered Blower, Cooling Blower, Vortex, Cooling Dryer or TE Cooling Blower - Warming Blower Kit		
ENVIRONMENTAL CONDITIONS				+15°C (59°F) at 40°C (104°F) external temperature with 50% Duty Cycle or 36°C(100°F) external temperature with 100% Duty Cycle. Humidity between 10% and 95%, without condensation. No vibrations.		