



# THERMAL INK JET SOLUTIONS



Offering a variety of Thermal Inkjet (TIJ) printers and configurations providing crisp high-resolution codes for both porous and non-porous products. Easy to use, hassle-free and affordable technology that can be easily installed into both new and existing production lines. Increase up time with a virtually maintenance free system. Eliminate the cleaning, flushing, PM contracts and parts along with the solvents and waste associated with traditional coding solutions.

Offering systems for harsh or wash down environments as well as multi-head systems. Suitable for larger messages or coding on multiple sides of a product. TIJ systems are suitable for virtually any market application and includes anti-counterfeiting, track and trace and UDI solutions.

All environments are different, that's why our sales team will work with you from start to finish to ensure an optimal solution.



ID Technology ClearMark® TIJ



Code Tech Integra One IP TIJ

## TIJ Print Material

### FOOD AND BEVERAGE

Inks available to print on cryovac films, polypropylene, polyethylene, polystyrene, and various multi-barrier films.

- Simple solutions for Sara III and Track and Trace requirements and Best By Codes.
- Easily attach to conveyors, vertical and horizontal baggers and sealers.

### PROTEIN

Inks that print onto non-porous and substrates used for protein packaging.

- TIJ printers built to IP65 environmental protection, producing excellent code quality regardless of the environment.
- No need to deal with MEK or other solvents.

### PHARMACEUTICAL AND MEDICAL DEVICES

Clean, mess free application ideal for healthcare applications.

- Covert inks to prevent counterfeiting and diversion.
- Achieve DSCSA compliance with GS1 datamatrix barcode.
- GS1 and HIBCC barcodes for UDI compliant.
- Prints on a wide range of substrates, porous and nonporous such as, plastic labels, UV varnish labels, and Tyvek®, etc.

### BUILDING MATERIALS AND OTHER NON CONSUMER DURABLES

Applications include wire, cable, wood, drywall/gypsum, PVC, metal pipes, HDPE, buckets, carpet printing systems, kraft bags, vinyl siding, paper backed rolled insulation and more.

*Engineered and Built For High Performance and Maximum Durability*

# SMART



## PRINTERS



### ClearMark®

ClearMark can print high quality text, graphics and barcodes onto just about any primary or secondary packaging material. Designed to be affordable and incredibly easy to install and use, ClearMark is virtually maintenance free and produces consistently high quality codes.



### Integra One

Integra One is a sleek and extremely compact system utilizing HP printhead technology. Integra One includes an onboard screen and control to offer stand alone intuitive and simple operation right from the head.



### X1 Jet

The X1 Jet is a small, compact, independently operating printhead for easy integration into production lines. X1 Jet provides cost effective high-quality and high-resolution printing and is suitable for a variety of primary and secondary coding applications. The X1 Jet is also offered in a Slimline model for applications with tighter space tolerances.

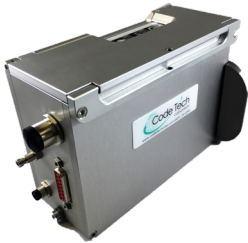
# WASHDOWN

## PRINTERS



### Integra One IP

Washdown inkjet printer with IP65 rating for industrial environments. Designed for harsh environments including high temperatures and wet integrations. Suitable for use on form, fill, seal machines amongst countless other machine types and configurations.



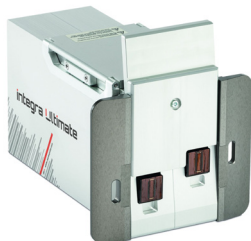
### X1 Jet Washdown

Based on the standard X1 Jet, the X1 Jet Washdown is IP65 rated and designed for harsh industrial environments. X1 Jet Washdown can withstand 195° steam shrink tunnels as well as other high and low temperature wet applications.



### ClearMark® Washdown

ClearMark Washdown is based on the standard ClearMark system, but includes affordable stainless steel washdown features to allow it to run in harsh environments on a variety of machine types and applications with the same high-quality print performance. ClearMark Washdown provides the same ease of use and the flexibility while remaining virtually maintenance free.



### Ultimate

A revolutionary new HP thermal inkjet head that provides automatic Self-Wiping action and seals to provide an IP65 rating without the need for cartridge blanks or bagging.

The new one-inch printhead enjoys a patent-pending, self-wiping and self-capping internal shutter. This new concept eliminates the need for manual print cartridge service routines, even after days of non-use.

The new printer utilizes HP solvent-based ink for printing on all films, overwrap and other non-porous substrates and can be retrofitted on wrappers, baggers and other form, fill and seal equipment.

# HANDHELD

## PRINTERS



### CT-1 Jet HP HandHeld

Battery operated, the lightweight and compact X1 Jet HP Handheld will print high resolution text and images in multiple locations without being in a fixed position requiring a conveyor to move product past the head. Excellent for coding rework or stationary products. The X1 Jet HP Handheld offers long battery life and is easy to program with text and images via a simple USB stick.



### X4 Jet Controller

Universal and ultra-fast print controller with intuitive touchscreen. The X4 Jet Controller can be configured with 1 to 4 controller based printheads of either the HP or Funai (Lexmark) format. A wide variety of head configurations is offered that will fit almost any application. The X4 Jet Controller can be split to run two separate production lines with I/O for each. The X4 Jet Controller is compact and self-contained unit that offers Ethernet, USB and serial communications for easy integration into any production line.



### Integra Quadro Controller

A simple, very compact and intuitive controller to provide basic production operation. The Quadro can drive up to 4 controller based print heads and can be split to run two separate production lines with I/O for each.



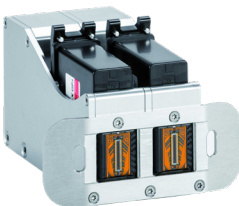
### Single Head Printhead

Controller Based Printhead for use with an X4 Jet or Quadro Controller. Available in a variety of configurations for optimal cable access and application fit. Available for HP or Funai (Lexmark) cartridge technology.



### Dual Head Printhead

Controller Based Printhead for use with an X4 Jet or Quadro Controller. Available in a variety of configurations for 2, 3, 4, 6 or 8 cartridge applications. Different cable access for optimal application fit. Available for HP or Funai (Lexmark) cartridge technology.



### Non-Stop Printhead

Controller based Non-Stop printhead (zero downtime) offers two cartridges side by side to offer redundancy. The cartridges share the print job and when one cartridge is empty, the other cartridge runs without interruption while the empty cartridge is replaced. Offered in HP or Funai (Lexmark) cartridge technology.



Customers across North America depend on ID Technology, EPI, Greydon and Code Tech to design, build, and install the most effective product, case, and pallet identification systems for their production lines. As a leading manufacturer and integrator of labeling, coding, and marking equipment, we take the time to understand our customer's needs, which means...we have your solution.

ID Technology also provides our customers with six separate label converting plant locations across North America to efficiently and quickly produce quality labels and tags. As part of the ProMach Labeling & Coding business line, ID Technology, EPI, Greydon and Code Tech help our packaging customers protect and grow the reputation and trust of their consumers. ProMach is performance, and the proof is in every package.

5051 N. Sylvania Ave., Ste. 405  
Ft. Worth, TX 76137  
P: 817-626-7779  
TOLL FREE: 888-438-3242  
E: IDT@ProMachBuilt.com  
IDTechnology.com

743 Alexander Road, Unit 11  
Princeton, NJ 08540  
P: 609-720-0290  
CodeTechCorp.com